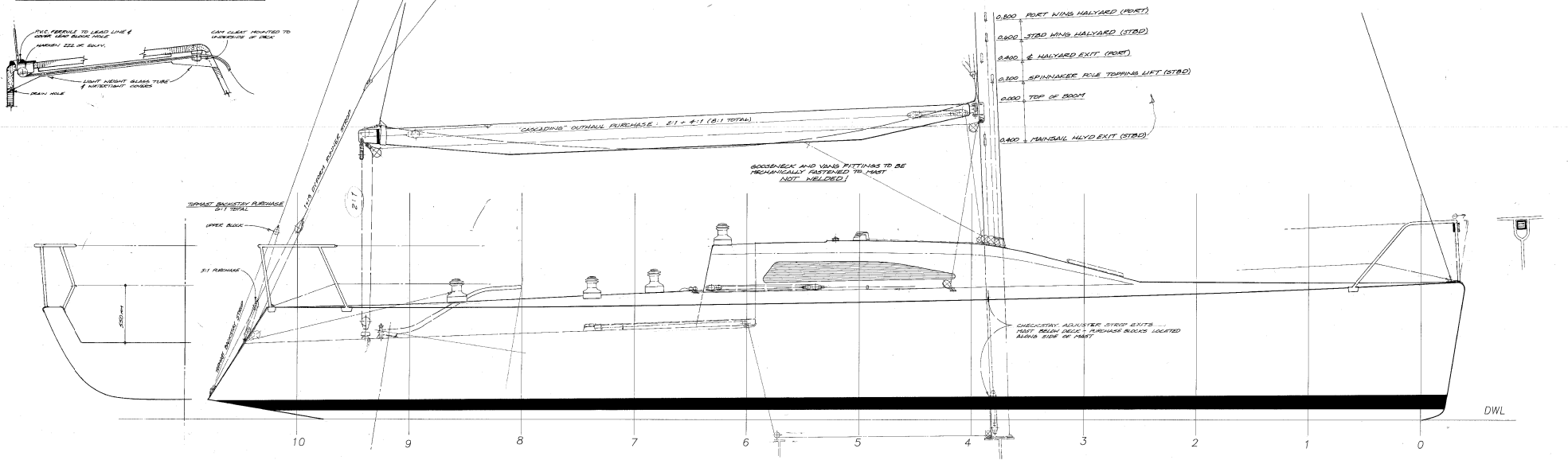


UNDER-DECK SPIN BARBERHAULER DETAIL SCALE 1:5



DECK HARDWARE

ITEM	MINIMUM BREAKING STRENGTH
GENOA SHEET CARS - FIBER	3770 lbs 1800 kgs
GENOA SHEET CARS - FIBER - ICING 45HL	3770 lbs 1800 kgs
JIB SHEET CARS - FIBER	4430 lbs 2010 kgs
JIB SHEET CARS - FIBER - ICING 45HL	3980 lbs 1800 kgs
GENOA TRACK	3640 lbs 1650 kgs
JIB TRACK	3670 lbs 1650 kgs
PADEYE @ SHEER	3180 lbs 1440 kgs
SCHWARZ TRUCK STOP	1980 lbs 900 kgs
CAR FILLER BLOCK ON OR	1980 lbs 900 kgs
CAR FILLER CHECK BLOCK	990 lbs 450 kgs
GENOA SHEET CUNNINGHAM	3380 lbs 1530 kgs
SPINNAKER BELLOW PACE	380 lbs 170 kgs
SPINNAKER SHEET SPLICER	2330 lbs 1050 kgs
SPINNAKER BARS/HAULER BLOCKS	1810 lbs 820 kgs
ATEX/RYL BLOCK/PADYE	7020 lbs 3180 kgs
ATEX/RYL SMOCKLE	2380 lbs 1080 kgs
FOREDEYE BLOCKS ON DECK	1250 lbs 570 kgs
FOREDEYE BLOCK ON POLE	1770 lbs 800 kgs
UPPER RUNNER BLOCK	9200 lbs 4210 kgs
RUNNER TURNING BLOCK	8200 lbs 3800 kgs
UPPER TURNING BLOCKS 2:1	141 lbs 64 kgs
TOPMAST BACKSTAY PURCHASE BLOCKS 2:1	730 lbs 330 kgs
HT MANDSHEET BLOCK @ BOOM END	1650 lbs 750 kgs
TWO MANDSHEET BLOCK @ BOOM END	5280 lbs 2400 kgs
MANDSHEET BLOCK ON TRAVELER	1710 lbs 780 kgs
MANDSHEET TURNING BLOCKS @ DECK/MAST	1240 lbs 560 kgs
TRAVELER PURCHASE BLOCKS 6:1	3300 lbs 1500 kgs
TRAVELER CAR - 45HL Working Load	7200 lbs 3250 kgs
WING LEAD (Genoa)	240 lbs 110 kgs
WING LEAD (Genoa)	3880 lbs 1750 kgs
OUTHAUL PURCHASE BLOCKS 4:1	820 lbs 370 kgs
MANDSHEET CUNNINGHAM PURCHASE BLOCKS 2:1	1100 lbs 500 kgs
CHECKSTAY ADJUSTER PURCHASE BLOCKS 6:1	1630 lbs 740 kgs

MAST COLLAR BLOCKS

ITEM	MINIMUM BREAKING STRENGTH
GENOA/SPINNAKER HALVARD	4150 lbs 1870 kgs
MANDSHEET HALVARD TURNING BLOCK @ DECK	4970 lbs 2250 kgs
TOPPING LIFT TURNING BLOCK	2100 lbs 950 kgs
CLEW REEF SWATCH BLOCK @ DECK	2140 lbs 960 kgs

STITCHES & CLIPS

ITEM	MINIMUM BREAKING STRENGTH
GENOA/SPINNAKER HALVARD	4150 lbs 1870 kgs
MANDSHEET HALVARD	4970 lbs 2250 kgs
MANDSHEET HALVARD	4970 lbs 2250 kgs
TOPPING LIFT	2100 lbs 950 kgs
FOREDEYE	300 lbs 135 kgs
CAR FILLER	300 lbs 135 kgs
WING	300 lbs 135 kgs
SPINNAKER BARBERHAULER	300 lbs 135 kgs
CHECKSTAY ADJUSTER	300 lbs 135 kgs
MANDSHEET CUNNINGHAM	300 lbs 135 kgs
TOPMAST BACKSTAY	300 lbs 135 kgs
POLE CAR CONTROLS	300 lbs 135 kgs

ENSURE THAT THE YACHT IS IN COMPLIANCE WITH THE U.S. RULE, O.R.C. SPECIAL REGULATIONS, AND LOCAL AUTHORITY REGULATIONS

ITEM

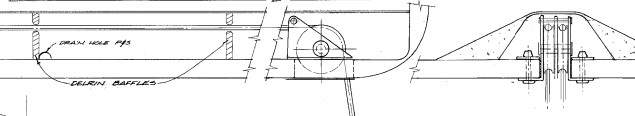
ITEM	MINIMUM BREAKING STRENGTH
HALVARD & LINES	
GENOA/SPINNAKER HALVARD - WIRE	3640 lbs 1650 kgs
GENOA/SPINNAKER HALVARD - TAL	4820 lbs 2180 kgs
MANDSHEET HALVARD - WIRE W/LOCK	3640 lbs 1650 kgs
MANDSHEET HALVARD - TAL W/LOCK	3640 lbs 1650 kgs
SPIN POLE TOPPING LIFT	1480 lbs 670 kgs
MANDSHEET GEM REEF	2670 lbs 1200 kgs
OUTHAUL SHEET	1830 lbs 830 kgs
OUTHAUL TAIL (2:1)	1010 lbs 460 kgs
GENOA SHEET CUNNINGHAM STOP	1210 lbs 550 kgs
CHECKSTAY ADJUSTER STOP	2290 lbs 1040 kgs
GENOA SHEET SPECTRA	8020 lbs 3630 kgs
CAR FILLER STOP	1980 lbs 900 kgs
SPINNAKER BARBERHAULER (2:1)	3300 lbs 1500 kgs
SPINNAKER SHEET	3300 lbs 1500 kgs
SPINNAKER SHEET OUT SPECTRA	790 lbs 350 kgs
FOREDEYE (2:1)	1560 lbs 700 kgs
MANDSHEET (6:1)	1000 lbs 450 kgs
RUNNER TAL 2:1 SPECTRA	5515 lbs 2500 kgs
TOPMAST BACKSTAY STOP	920 lbs 420 kgs

NOTES

1. ALL PARTS MUST BE APPROVED BY THE U.S. RULE, O.R.C. SPECIAL REGULATIONS, AND LOCAL AUTHORITY REGULATIONS.
2. ALL PARTS MUST BE APPROVED BY THE U.S. RULE, O.R.C. SPECIAL REGULATIONS, AND LOCAL AUTHORITY REGULATIONS.
3. ALL PARTS MUST BE APPROVED BY THE U.S. RULE, O.R.C. SPECIAL REGULATIONS, AND LOCAL AUTHORITY REGULATIONS.

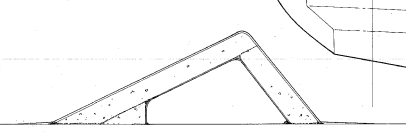
NOTE: Purchase lines to be sized for landing contact

DETAIL OF HOLLOW FOOTSTOP ON 1/2" - 1/8" SIZE



STANCHION BASE PLATE MUST BE POSITIONED AND SUPPLY ANGLE TO STANCHION MANUFACTURER. STANCHION MUST BE POSITIONED AND SUPPLY ANGLE TO STANCHION MANUFACTURER. STANCHION MUST BE POSITIONED AND SUPPLY ANGLE TO STANCHION MANUFACTURER.

STANCHION CONSTRUCTION DETAIL NOT TO SCALE



BRUCE PARR AND ASSOC., INC.
 P.O. BOX 4084 ANNAPOLIS, MD. 21403, U.S.A.
40 FOOT J.M.S. RACING YACHT
 FOR -
 SCALE: 1:15
 DRAWING NO: 277
 DATE: 10/20/92
 DRAWN BY: J.A.
 CHECKED BY: J.A.